



2021
ROUNDUP

THE GREAT BIG BIOMEDICAL SCIENCE QUIZ

As we say goodbye to 2021, we finish the year with two rounds of questions to test members' knowledge on the pandemic and science headlines from the last 12 months.

ROUND ONE: THE PANDEMIC

- 1 What does the 19 stand for in COVID-19?
● It was discovered in 2019 ● It is the nineteenth known coronavirus ● There are 19 variants
- 2 What does the "corona", mean in coronavirus?
● Sun ● **Crown** ● Respiratory
- 3 An effective hand sanitiser contains at least what percentage of alcohol to kill the coronavirus?
● 20% ● **60%** ● 90%
- 4 In which month were nightclubs reopened for the first time in England?
June ● **July** ● August
- 5 What is the estimated total cost of NHS Test and Trace so far?
£14bn ● **£37bn** ● £97bn
- 6 In November, what type of animal tested positive for COVID-19 for the first time in the UK?
● Cat ● **Dog** ● Squirrel
- 7 As of 11 November, what percentage of the global population was estimated to have received at least one dose of a coronavirus vaccine?
● 15% ● 39% ● **53%**
- 8 Which region has had the most confirmed cases of COVID-19?
● **Americas** ● Europe ● South East Asia
- 9 In October, which of the following countries recorded their first case of coronavirus?
● **Tonga** ● North Korea ● Turkmenistan
- 10 How long was the lockdown in Sydney that ended in October?
● 65 days ● 99 days ● **107 days**

A

To see the answers, scroll to the bottom of the online version of the article, which can be found at thebiomedicalscientist.net

ROUND TWO: A YEAR IN SCIENCE

- 1** January – In Lyon, France, the first transplant of what was performed on an Icelandic patient?

 - All limbs ● **Both arms and shoulders**
 - Stomach
- 2** February – Scientists reported the first sequencing of DNA from animal remains more than a million years old. What was the animal?

 - **Mammoth** ● Jellyfish ● Coelacanth
- 3** April – A vaccine with 77% efficacy after one year – the first to meet the WHO’s goal of 75% efficacy – was reported by the University of Oxford. What disease does it protect against?

 - COVID-19 ● **Malaria** ● Tuberculosis
- 4** May – Scientists reported that what type of diet protects against memory decline and mediotemporal atrophy by decreasing amyloidosis and tau-pathology?

 - Vegetarian diet ● Vegan diet
 - **Mediterranean diet**
- 5** May – Researchers reported that which animals were successfully trained to detect COVID-19 infections via samples?

 - **Bees** ● Otters ● Zebra fish
- 6** July – Scientists reported in a preprint that the viral load in the first positive test of infections with the SARS-CoV-2 Delta variant was on average approximately how much higher compared with infections during 2020?

 - **1000 times** ● 100 times ● 10 times
- 7** September – Bioengineers announced the development of a viable gene-editing system that is about twice as compact as those commonly used at present. What is it called?

 - CassMark2 ● **CasMINI** ● MaMa Cass
- 8** September – A drug already approved for human use was shown to reverse atherosclerosis, the process responsible for heart attacks, in mice. What is the drug?

 - Fentanyl ● **Cysteamine** ● Ketamine
- 9** October – David Julius and Ardem Patapoutian were awarded the Nobel Prize in Physiology or Medicine 2021 for what?

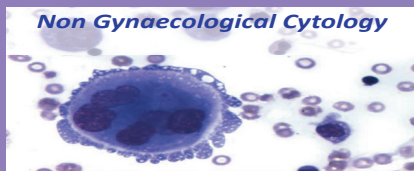
 - Pioneering work on the gene editing tool CRISPR–Cas9 ● **The discovery of receptors for temperature and touch** ● Work on coronavirus vaccine development
- 10** November – A report from Genomics England and NHS England stated genome sequencing could save the NHS millions of pounds through helping to detect rare diseases. What percentage of the UK population is affected by rare, inherited diseases?

 - 0.2% ● 3% ● **6%**

NEPSEC North of England Pathology and Screening Education Centre



Non Gynaecological Cytology



Courses in Basic Practice Diagnostic Cytology

These courses cover serous fluids, urine and respiratory cytology and are ideal for non medical staff new to diagnostic cytology and wishing to gain experience or further their knowledge. Dates can be booked separately if desired.

Dates TBC subject to continued demand

Update and Refresher Courses in Diagnostic Cytology

These courses cover serous fluids, urine and respiratory cytology and ideal for anyone wishing to further their experience in non-gynaecology and are suitable for medical and non medical staff. Dates can be booked separately if desired.

Dates TBC subject to continued demand

Please register your interest with the team for further information.

Training Opportunities 2021-22



One-Day Update Course in Cytology – Atrophy

The course is designed to fulfil the requirements of an update workshop. The course describes the process of atrophy, its causes and how cytologists can deal with the problems it leads to.

Dates throughout 2021-2022

Two-Day Course for Cervical Screening Provider Leads (CSPL)

These one day events have been put together in association with the NHSCSP Cervical Cancer Audit Management Group to help guide both new and experienced CSPLs through the various aspects of their role.

22nd & 23rd February 2022

One-Day Course - Breaking Bad News

This day is designed to give delegates the opportunity to explore some of the communication challenges they may face in their role as a CSPL.

21st February 2022



Two-Day Haematological Morphology Study Days

These days are specifically for those working towards their Specialist portfolio in Haematology, but is suitable as a refresher for those returning to the subject or an update for those already qualified.

10th & 11th January 2022

A Course for the Expert Role in Specimen Dissection

This course is suitable for BMSs who intend to train as histological tissue specimen dissectors, in particular those undertaking the RCPATH/IBMS Diploma. It covers all the mandatory modules.

Commencing on 26th & 27th January 2022 with the Introductory Modules, specialist module sessions are scheduled throughout 2022.

Please register your interest with the team for further information.

For further information contact our Admin Team: sht-tr.nepsec@nhs.net Tel: 0113 2466330 www.nepsec.org.uk