

SCIENCE NEWS IN NUMBERS

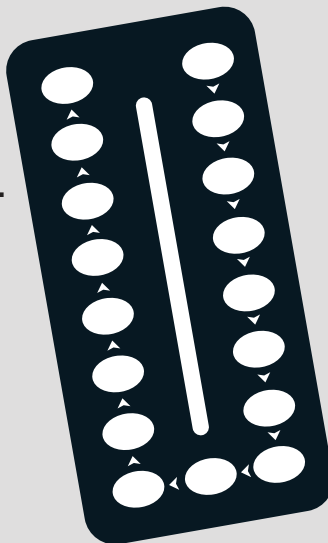
CONTRACEPTIVE STUDY

New research shows a

20% higher risk of breast cancer among women who were currently using or had recently used hormonal contraceptives than among those who had never used them. The study included 1.8 million women in Denmark who were followed up for nearly 11 years on average

Among women taking the pill for five years, the study suggests, there would be

an extra one case for every 1,500 women.



120%

The increase in the patients who have **waited more than four hours at A&E** in the last 12 months in the UK. By comparison, the number of visits has risen by just over 7%.

UK LIFE EXPECTANCY

The Office for National Statistics has released the latest figures for life expectancy in all regions across the UK

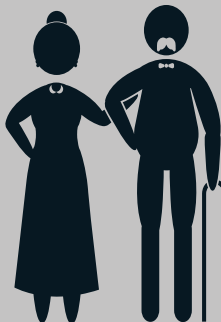
WOMEN

BEST 86.8

Camden

WORST 78.8

West
Dunbartonshire



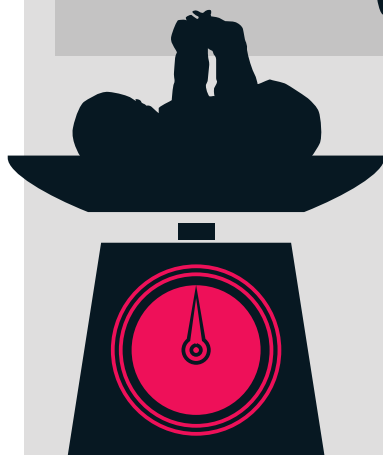
MEN

83.7 BEST

Chelsea
& Kensington

73.4 WORST

Glasgow
City



Exposure to higher levels of damaging PM2.5 particles caused by traffic can mean a

6% increase

in risk of giving birth to a baby with low birthweight.

The figure comes from a study by scientists from Imperial College London, King's College and St George's, published in the *British Medical Journal*.

CHILDHOOD OBESITY

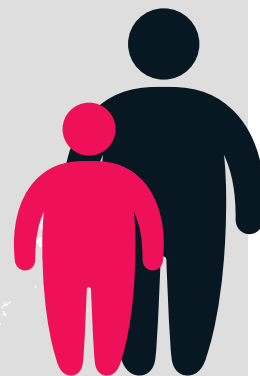
A study of nearly 12,000 UK children

25%

were overweight or obese at **age seven**, rising to

35% at 11

Rates of excess weight varied by nation:



40%

of young people in Northern Ireland

35%

in both Scotland and England

38%

in Wales

