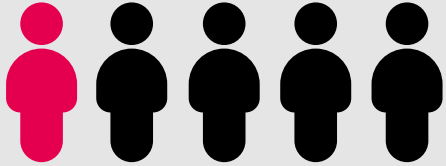


SCIENCE NEWS IN NUMBERS



In 2016-17 there were **529,318** emergency readmissions reported by **84** hospital trusts.

The number of emergency readmissions has risen by **23%** over the past four years.

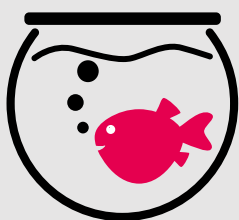


1 in 5 of the readmissions were within **48** hours of discharge.



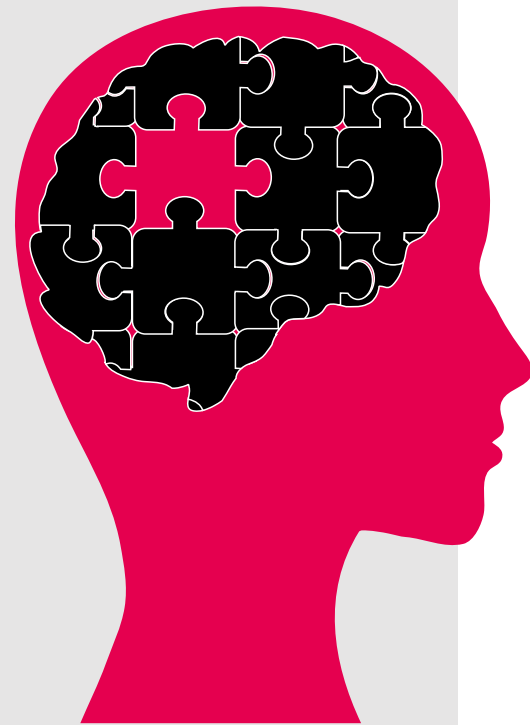
There was a **29%** rise in people being readmitted within 24 hours.

32,755 medical research papers, published over decades, are invalid. In many cases, scientists believed they were working on human cells, but they were working on mouse cells.



Loneliness vs. obesity

US researchers looking at the effects of social isolation found lonely people have a **50%** increased risk of early death. In contrast, obesity raises the risk by around **30%**.



300,000

People with long-term mental health problems have to leave their jobs each year, according to a new government report.

£99bn

Is the annual cost to the UK economy each year due to poor mental health.

11%

Of companies include a section on employee mental health in their annual reports.

Cancer statistics

- There were **2.5m** cancer cases in the UK in 2015
- This has an **annual** cost to the UK economy that **exceeds £15bn**.
- The **number of cases** is expected to rise to **4m** by 2030.